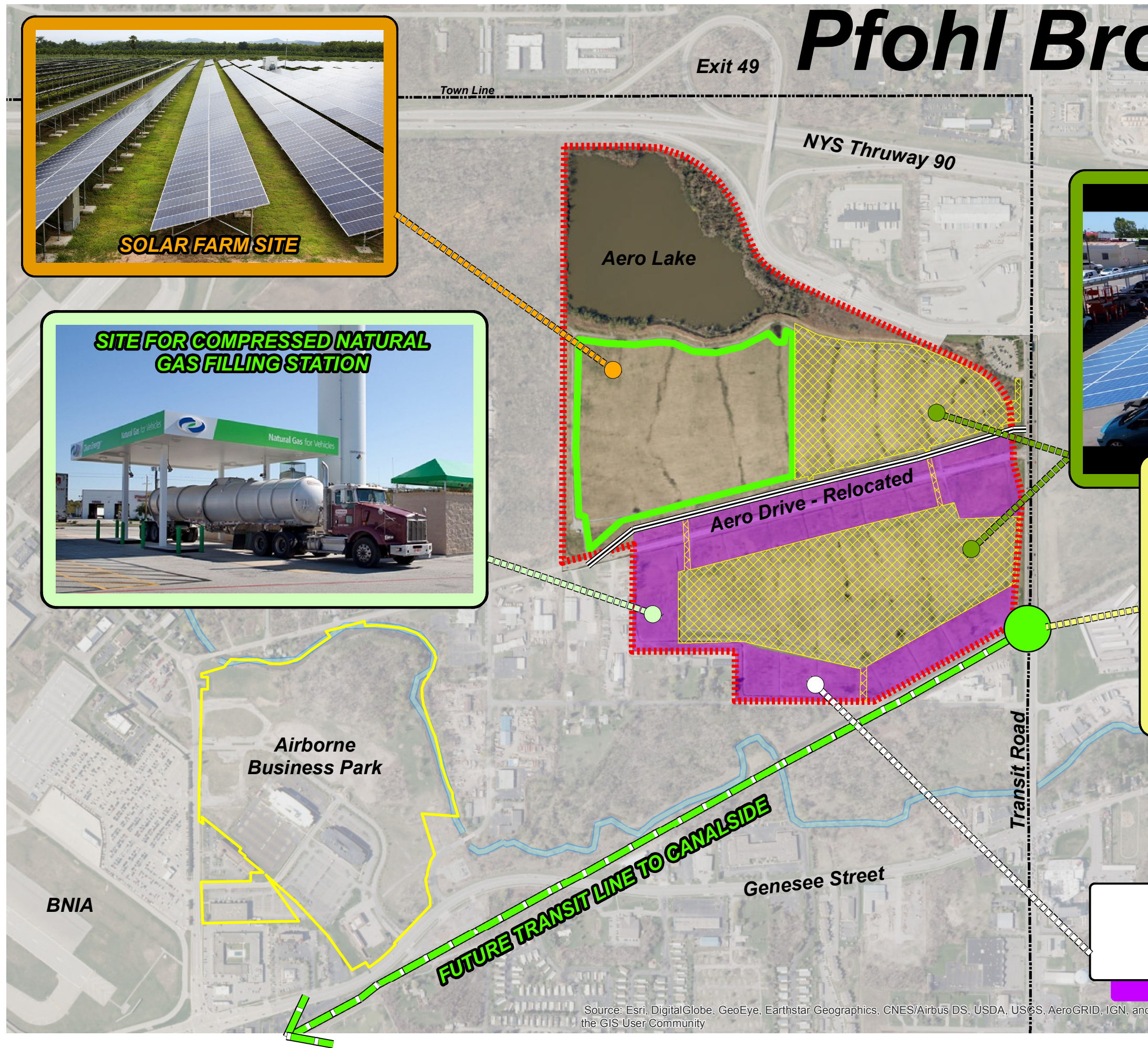


Pfohl Brothers B.O.A.



**SITES FOR FUTURE DEVELOPMENT
NOT IMPACTED
BY REMEDIATED LANDFILL**



Source: Esri, DigitalGlobe, GeoEye, Earthstar Geographics, CNES/Airbus DS, USDA, USGS, AeroGRID, IGN, and the GIS User Community